



### 300w Black Pellet Igniter

GRWAY Black 300W Black Pellet Igniter is widely used in biomass burning system, esp. in pellet stoves and barbecue grills. It has a high efficiency (more than 90%) of ignition and very easy to install before operating.

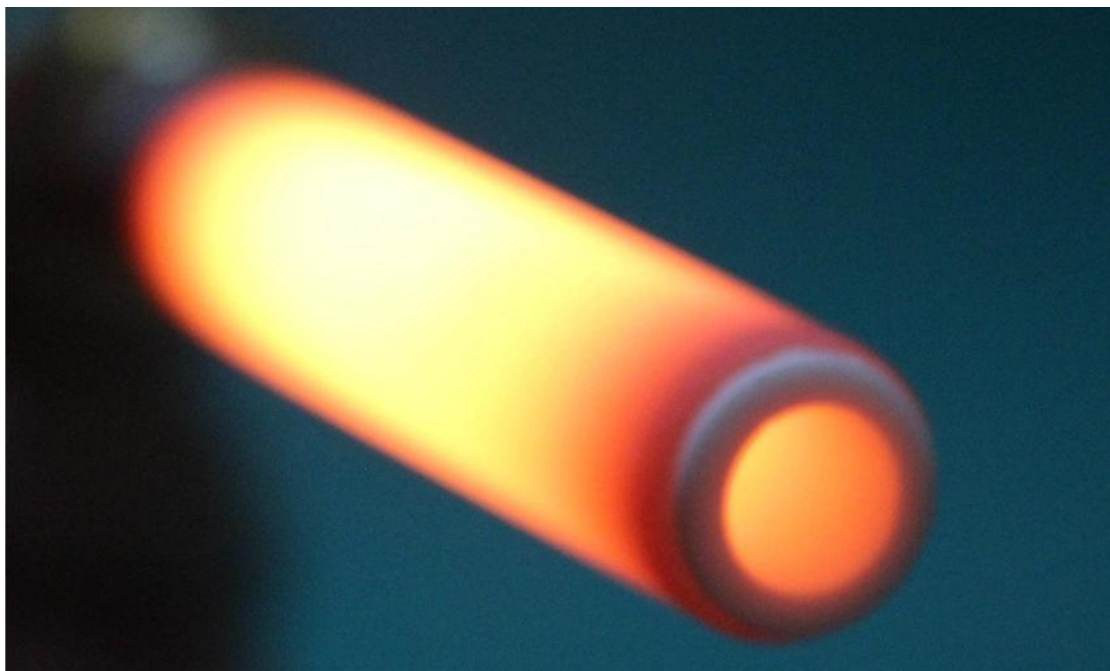
**Model:300W Black**

### 300W Black Pellet Igniter

GRWAY **300W Black Pellet Igniter** is widely used in biomass burning system, esp. in pellet stoves and barbecue grills. It has a high efficiency (more than 90%) of ignition and very easy to install before operating.

- Wood pellet stove
- Wood pellet boiler
- Wood pellet burner
- Wood chips burner
- Straw burner
- Other biomass burner

Ceramic lighting resistor for pellet stoves, designed to light pellets and wood chips for stoves boilers and burners.



### Process of 300W Black Pellet Igniter

**300W Black Pellet Igniter** are resistive piece of ceramic, often treated with a metallic coating. The ceramic heating element creates heat based on resistance to electrical flow through the ceramic element. This is done to provide heat to a room or other area via convection or forced air.

### More Details of 300W Black Pellet Igniter

Ceramic Flange/copper thread fixing,

Dimension:11.55mm diameter, 113mm total length, 78mm up to screw length,

Max working temperature 970°C.

Power:300Watt,

Welcome to contact us directly for more details



### Black 300W pellet Igniter Warranty

18 months Warranty for the Ceramic Igniter(from the date of shipping)

Greenway will replace the failed heaters due to a defective design and production during the warranties.

For other matters:

Defects or damages resulting from any improper installation and using are not covered under the warranty.

Besides, we are also not responsible in the below cases:

- >Damaged during the transportation
- >Damaged during the natural disasters

